

SS Case

MIEPL make Master Pressure Gauge are used in Industrial Test Labs and Calibration labs. Precision measuring system, High Resolution Dial, Knife Edge Pointer, Anti-Parallax mirror band with high accuracy class.



FEATURES

- Precision measuring system
- High resolution dial
- Knife Edge pointer
- Anti-parallax mirror band
- Jewel bearing movement
- Easy to read scale

APPLICATION

- Calibration & testing labs
- Calibration & testing of industrial pressure gauges

REFERENCE

- EN 837-1

STANDARD SPECIFICATIONS

Dial size	: Dn150 / DN250
Range	: -1...700 bar
Mounting pattern	: Direct, Bottom connection
Process connection	: 1/2" NPT (M) / 1/2" BSP (M)
Ingress protection	: IP 65
Execution	: Dry
Carrying case	: Wooden carrying case
Calibration certificate	: Calibration certificate traceable up to National & International standards

STANDARD PARAMETERS

Accuracy	: CL 0.25
Ambient Temperature	: 20...+65°C
Service Temperature	: 65°C max.
Pressure limits	: Steady pressure up to 75% of FS value
Weld joints	: Silver alloy brazing

MATERIAL OF CONSTRUCTION

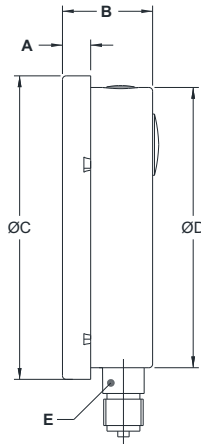
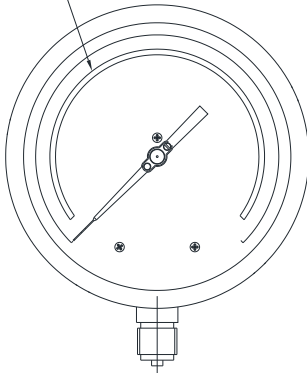
Sensing Element	: Bourdon Tube (<100 bar : C - type , >100 bar : Helical)
Case & Ring material	: AISI 304 SS (Bayonet type)
Bourdon tube	: Beryllium Copper
Shank	: Copper alloy
Integral dampening screw	: Copper alloy
Movement mechanism	: High precision (Jewel bearing type)
Dial	: Aluminum, green with black marking & anti-parallax mirror band
Pointer	: Balanced, knife-edge micrometer adjustable
Pointer stopper	: Spring type
Gaskets, Blow off disc	: NBR
Window	: Safety glass

TEMPERATURE EFFECT

Please refer clause no 9.3 of EN 837-1

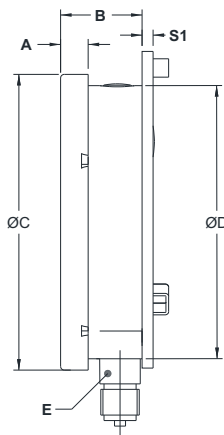
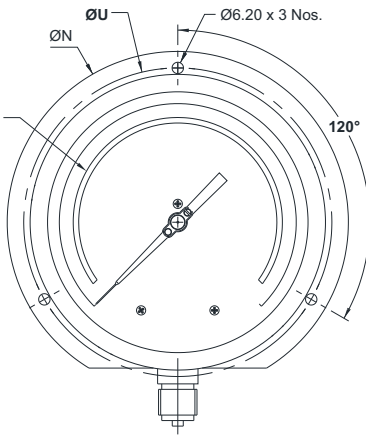
DRAWING

Mirror band



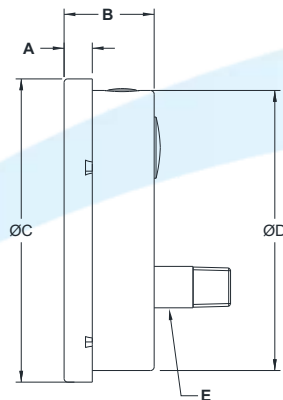
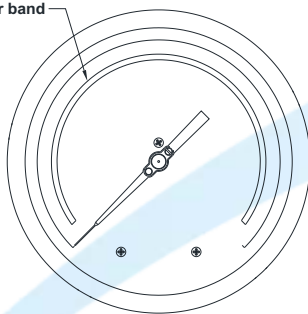
Type - 1A		
DN	150	250
A	15	18.5
B	48	50
ØC	161	263
ØD	149	250
E	SQ. 22	SQ. 22
Weight (gm)	970	2160

Mirror band



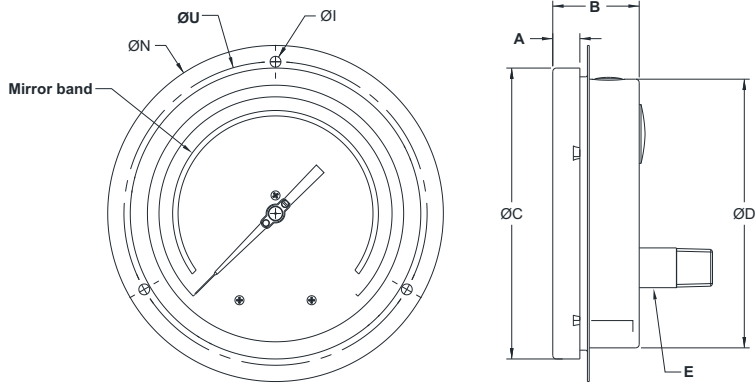
Type - 1B		
DN	150	250
A	15	18.5
B	46	48
ØC	161	263
ØD	149	250
E	SQ.22	SQ.22
ØI	6	7
M	172.4	286.5
ØN	186	290
S1	6	1.5
ØU	168	276
Weight (gm)	1080	2390

Mirror band

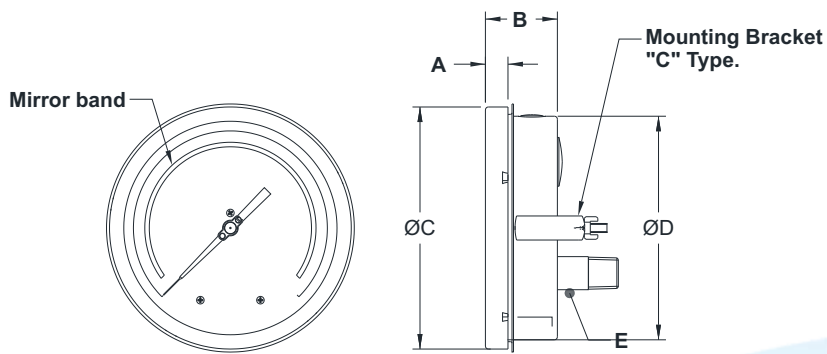


Type - 2E		
DN	150	250
A	15	18.5
B	48	50
ØC	161	263
ØD	149	250
E	SQ. 22	SQ. 22
Weight (gm)	960	2160

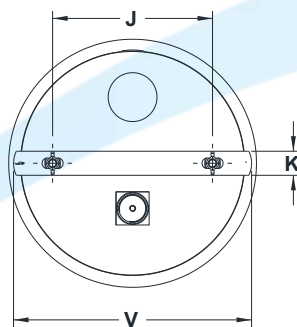
DRAWING



Type - 2F		
DN	150	250
A	15	18.5
B	48	50
ØC	161	263
ØD	149	250
E	SQ.22	SQ.22
ØI	6	7
ØN	186	290
ØU	168	276
Weight (gm)	1080	2370



Type - 2G		
DN	150	250
A	15	18.5
B	48	50
ØC	161	263
ØD	149	250
E	SQ.22	SQ.22
J	106.5	180
K	161	30
V	58.5	270
Weight (gm)	1150	2450



ORDERING CODE

MP29 - F - XXX - 1A - 4NM - IP2 - E1

1. DIAL SIZE	150 mm / 6"	F				
	250 mm / 10"	H				
2. RANGE	Refer "Range Table"		XXX			
3. MOUNTING PATTERN	Direct, Bottom connection			1A		
	Wall/Surface/Projection mounting, Bottom connection			1B		
	Lower, Back connection			2E		
	Panel/Front flange mounting, Lower Back connection			2F		
	Panel/bracket mounting, Lower Back connection			2G		
4. PROCESS CONNECTION	¼" NPT (M)				2NM	
	½" NPT (M)				4NM	
	½" BSP (M)				4BM	
	M20 X 1.5 mm (M)				4MM	
	Other thread size and standards available on request. ¹					
5. INGRESS PROCESS	IP 65					IP2
6. EXECUTION	Dry					E1
7. OTHER OPTIONS	Dampening screw, AISI 316 SS	DN	SS tag plate, AISI 304 SS			WF
	Cu-Alloy Shank	LA	Custom designed dial			WR
	AISI 316 SS shank	LF	Dial tag marking			WT

Ordering Example: **MP29 - F - XXX - 1A - 4NM - IP2 - E1**

1. For other connections, please contact factory.