

*Solid Front With Blow-out Back*

**MIEPL** make High Safety SS Pressure Gauges are based on the proven Bourdon tube measuring system. On pressurization, the deflection of the Bourdon tube, proportional to the incident pressure, is transmitted to the movement via a link and indicated. The modular design enables a multitude of combinations of case materials, process connections, nominal sizes and scale ranges.

**FEATURES**

- All Stainless steel System
- Safety Pattern type
- Dry / Liquid filled

**APPLICATION**

- Corrosive & Hazardous environments
- Oil & Gas application
- High Pressure Application

**REFERENCE**

- EN 837-1

**STANDARD SPECIFICATIONS**

Dial size	: DN100 / DN150
Range	: -1...0...1,600bar
Mounting pattern	: Direct, Bottom connection
Process connection	: ½" NPT (M) / ½" BSP (M)
Ingress protection	: IP 65
Execution	: Dry but fillable

**STANDARD PARAMETERS**

Accuracy	: CL 1.0
Ambient Temperature	: -40...+65°C (without dampening liquid) : -20...+65°C (with dampening liquid)
Service Temperature	: 300°C max.
Pressure Limits	: Steady pressure up to FS value : Fluctuating pressure up to 90% of FS value : Short time 1.3 x FS value for range up to 100 bar : Short time 1.15 x FS value for range above 100 bar
Weld Joints	: TIG argon arc welding

**MATERIAL OF CONSTRUCTION**

Sensing Element	: Bourdon Tube (<100 bar : C - type , >100 bar : Helical)
Case & Ring Material	: AISI 304 SS (Bayonet type)
Bourdon Tube & Shank	: AISI 316L SS (Shank welded directly to case)
Movement mechanism	: AISI 304 SS
Dial	: Aluminum, black graduation on white background
Pointer	: Micro-zero adjustable, aluminum, black powder coated
Gaskets, Blow off disc & filling plug	: Neoprene / NBR
Window	: Shatterproof safety glass
Blow off disc	: AISI 304 SS
Diaphragm	: NBR

**STAD. SPECIFICATIONS: DAMPENING LIQUID FILLED, GLYCERIN**

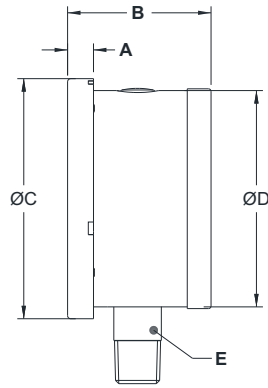
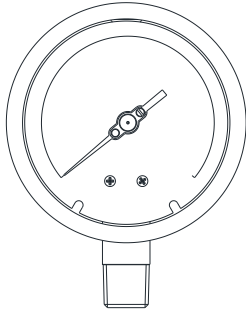
Window	: Shatterproof safety glass
Dampening liquid	: Glycerin 99.7% [Service temperature up to 65°C]

**TEMPERATURE EFFECT**

Please refer clause no 9.0 of EN 837-1

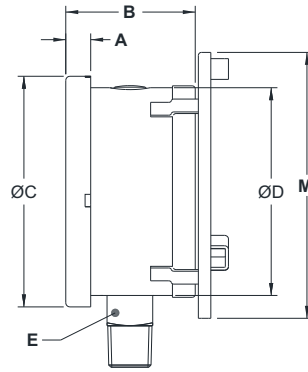
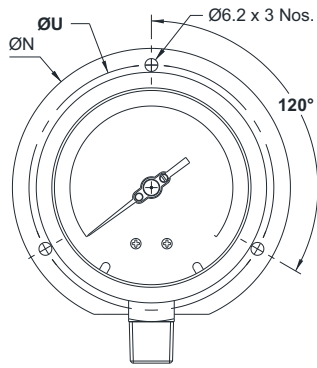
## DRAWING

### DIMENSIONAL DRAWING



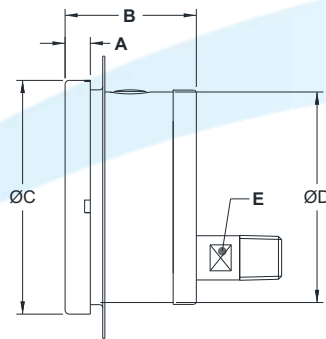
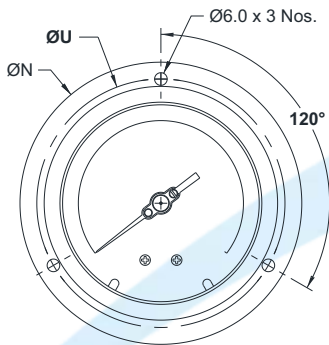
Type - 1A		
DN	100	150
A	12	17
B	66.5	68.5
ØC	111	161
ØD	100	149
E	SQ.22	SQ.22
Weight (gm)	850	1650

### DIMENSIONAL DRAWING



Type - 1B		
DN	100	150
A	12	17
B	66.5	68.5
ØC	111	161
ØD	100	149
E	SQ.22	SQ.22
M	128	172
ØN	134	186
ØU	118	168
Weight (gm)	920	1760

### DIMENSIONAL DRAWING



Type - 2F		
DN	100	150
A	12	17
B	66.5	68.5
ØC	111	161
ØD	100	149
E	A/F 17	A/F 17
ØN	134	186
ØU	118	168
Weight (gm)	920	1760

All dimensions are in mm.

## ORDERING CODE

MP06 - D - XXX - 1A - 4NM - IP2 - E2

1. DIAL SIZE	100 mm / 4"	D				
	150mm / 6"	F				
2. RANGE	<b>Refer "Range Table"</b>		XXX			
3. MOUNTING PATTERN	Direct, Bottom connection			1A		
	Wall / Surface / Projection mounting, Bottom connection			1B		
	2"Pipe/Yoke mounting, Bottom connection			1C		
	Panel / Front flange mounting, Lower Back connection <sup>4</sup>			2F		
4. PROCESS CONNECTION	¼" BSP (M)				2BM	
	¼" NPT (M)				2NM	
	3/8" BSP (M)				3BM	
	½" BSP (M)				4BM	
	M20 X 1.5 mm (M)				4MM	
	½" NPT (M)				4NM	
	Other thread size and standards available on request. <sup>1</sup>					
5. INGRESS PROTECTION	IP 65					IP2
	IP 66					IP3
	IP 67					IP4
6. EXECUTION	Dry					E1
	Dry but fillable					E2
	Dampening liquid filled, glycerine					E4
	Dampening liquid filled, silicon oil					E5
7. OTHER OPTION	Case & Ring in AISI 316 SS (1A)	AA	Knife edge pointer	FX	Helium leak testing	SL
	Case & Ring in AISI 316 SS (1B)	AB	Monel wetted parts	LN	Material test certificate 2.2	SM
	Case & Ring in AISI 316 SS (2F)	AL	Over range protection 1.5 x FS	NP	Tested to NACE standards	SN
	Case & Ring in AISI 316 SS (1C)	AC	High overpressure protection <sup>6</sup>	NS	Certification for oxygen service	SO
	Dampening screw, Monel	DM	Epoxy coating (Case & Ring)	O8	Performance test	SP
	Dampening screw, AISI 316 SS	DN	Receiver gauge <sup>3</sup>	Q9	C.C. <sup>5</sup> with NABL traceability	ST
	Internal overload stop	DX	Rubber parts, Viton	QN	Accuracy CL 0.5 / CL 0.6 of FS	WA
	Internal vacuum stop	DY	Vent plug, ON-OFF type	QW	SS tag plate, AISI 304 SS	WF
	Pointer stop on dial	DZ	5 - point calibration certificate	SA	SS tag plate, AISI 316 SS	WG
	AISI 316 SS movement	FL	Material test certificate 3.1	SC	Custom designed dial	WR
	Dampened movement	FM	CE certificate	SE	Dial tag marking	WT
	Maximum Reading pointer <sup>2</sup>	FW	IBR certification	SI		

Ordering Example : **MP06 - D - XXX - 1A - 4NM - IP2 - E2**

### Notes :

1. For other connections, please contact factory.
2. Available in dry version with accuracy CL 1.0 or above.
3. Please specify the second scale required.
4. Available in dry version only.
5. C.C. = Calibration Certificate.
6. Refer Factory for confirmation