

External Zero Adjustment

MIEPL make High Safety SS Pressure Gauges are based on the proven Bourdon tube measuring system. On pressurization, the deflection of the Bourdon tube, proportional to the incident pressure, is transmitted to the movement via a link and indicated. The modular design enables a multitude of combinations of case materials, process connections, nominal sizes and scale ranges. This also have the facility to adjust the Zero error from externally without opening the Bezel. facility to adjust the Zero error from externally without opening the Bezel.



FEATURES

- Solid front with full blow back
- All stainless steel system
- External zero adjustment
- Dry / liquid filled

APPLICATION

- Oil & Gas application
- High pressure applications
- Corrosive & Hazardous environments

REFERENCE

- EN 837-1

STANDARD SPECIFICATIONS

Dial size	: DN100 / DN150
Range	: -1...0...1,600bar
Mounting pattern	: Direct, Bottom connection
Process connection	: ½" NPT (M) / ½" BSP (M)
Ingress protection	: IP 65
Execution	: Dry but fillable
Zero adjustment	: External screw with locking mechanism

STANDARD PARAMETERS

Accuracy	: CL 1.0
Ambient Temperature	: -40...+65°C (without dampening liquid) : -20...+65°C (with dampening liquid)
Service Temperature	: 300°C max.
Pressure Limits	: Steady pressure up to FS value : Fluctuating pressure up to 90% of FS value : Short time 1.3 x FS value for range up to 100 bar : Short time 1.15 x FS value for range above 100 bar
Weld Joints	: TIG argon arc welding

MATERIAL OF CONSTRUCTION

Sensing Element	: Bourdon Tube (<100 bar : C - type , >100 bar : Helical)
Case & Ring Material	: AISI 304 SS (Bayonet type)
Bourdon Tube & Shank	: AISI 316L SS (Shank welded directly to case)
Movement mechanism	: AISI 304 SS
Dial	: Aluminum, black graduation on white background
Pointer	: Micro-zero adjustable, aluminum, black powder coated
Gaskets & filling plug	: Neoprene / NBR
Window	: Shatterproof safety glass
Blow off disc	: AISI 304 SS
Diaphragm	: NBR

STAND. SPECIFICATIONS: DAMPENING LIQUID FILLED, GLYCERIN

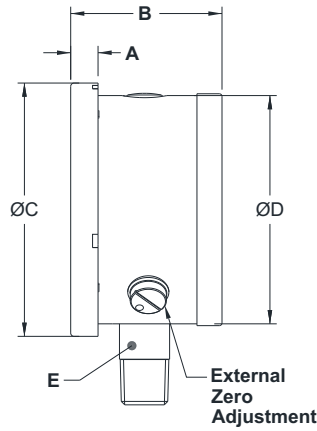
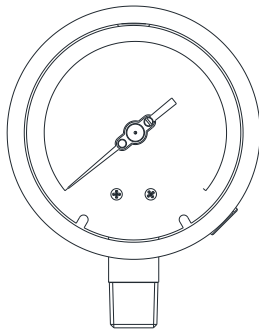
Window	: Shatterproof safety glass
Dampening liquid	: Glycerin 99.7% [Service temperature up to 65°C]

TEMPERATURE EFFECT

Please refer clause no 9.3 of EN 837-1

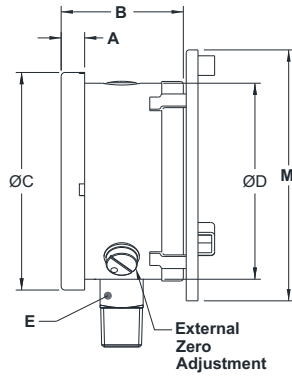
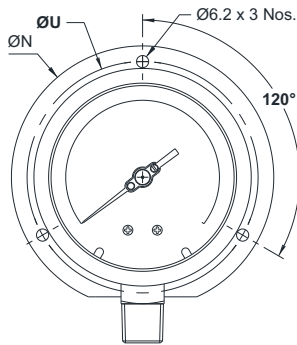
DRAWING

DIMENSIONAL DRAWING



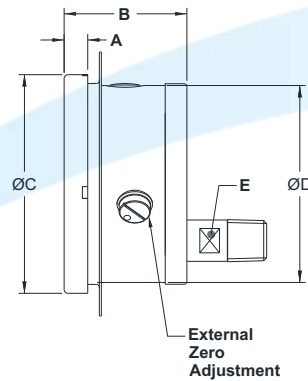
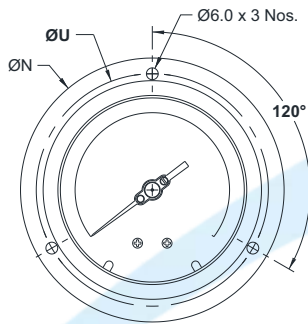
Type - 1A		
DN	100	150
A	12	17
B	66.5	68.5
ØC	111	161
ØD	100	149
E	SQ.22	SQ.22
Weight (gm)	895	1695

DIMENSIONAL DRAWING



Type - 1B		
DN	100	150
A	12	17
B	66.5	68.5
ØC	111	161
ØD	100	149
E	SQ.22	SQ.22
M	128	172
ØN	134	186
ØU	118	168
Weight (gm)	9570	1810

DIMENSIONAL DRAWING



Type - 2F		
DN	100	150
A	12	17
B	66.5	68.5
ØC	111	161
ØD	100	149
E	A/F 17	A/F 17
ØN	134	186
ØU	118	168
Weight (gm)	970	1820

All dimensions are in mm.

ORDERING CODE

MP07 - D - XXX - 1A - 4NM - IP2 - E2

1. DIAL SIZE	100 mm / 4"	D				
	150mm / 6"	F				
2. RANGE	Refer "Range Table"		XXX			
3. MOUNTING PATTERN	Direct, Bottom connection		1A			
	Wall / Surface / Projection mounting, Bottom connection		1B			
	2"Pipe/Yoke mounting, Bottom connection		1C			
	Panel / Front flange mounting, Lower Back connection ⁴		2F			
4. PROCESS CONNECTION	¼" BSP (M)			2BM		
	¼" NPT (M)			2NM		
	3/8" BSP (M)			3BM		
	½" BSP (M)			4BM		
	M20 X 1.5 mm (M)			4MM		
	½" NPT (M)			4NM		
	Other thread size and standards available on request. ¹					
5. INGRESS PROTECTION	IP 65				IP2	
	IP 66				IP3	
	IP 67				IP4	
6. EXECUTION	Dry					E1
	Dry but fillable					E2
	Dampening liquid filled, glycerine					E4
	Dampening liquid filled, silicon oil ²					E5
7. OTHER OPTION	Case & Ring in AISI 316 SS (1A)	AA	Knife edge pointer	FX	Helium leak testing	SL
	Case & Ring in AISI 316 SS (1B)	AB	Monel wetted parts	LN	Material test certificate 2.2	SM
	Case & Ring in AISI 316 SS (2F)	AL	Over range protection 1.5 x FS	NP	Tested to NACE standards	SN
	Case & Ring in AISI 316 SS (1C)	AC	High overpressure protection ⁶	NS	Certification for oxygen service	SO
	Dampening screw, Monel	DM	Epoxy coating (Case & Ring)	O8	Performance test	SP
	Dampening screw, AISI 316 SS	DN	Receiver gauge ³	Q9	C.C. with NABL traceability ⁵	ST
	Internal overload stop	DX	Rubber parts, Viton	QA	Accuracy CL 0.5 / CL 0.6 of FS	WA
	Internal vacuum stop	DY	Vent plug, ON-OFF type	QW	SS tag plate, AISI 304 SS	WF
	Pointer stop on dial	DZ	5 - point calibration certificate	SA	SS tag plate, AISI 316 SS	WG
	AISI 316 SS movement	FL	Material test certificate 3.1	SC	Custom designed dial	WR
	Dampened movement	FM	CE certificate	SE	Dial tag marking	WT
	Maximum Reading pointer ²	FW	IBR certification	SI		

Ordering Example : **MP07 - D - XXX - 1A - 4NM - IP2 - E2**

Notes :

1. For other connections, please contact factory.
2. Available in dry version with accuracy CL 1.0 or above.
3. Please specify the second scale required.

4. Available in dry version only.
5. C.C. = Calibration Certificate.
6. Refer Factory for confirmation