

Bar-stock , Bar-stock with exotic material RF

MIEPL Make MTH04 Flanged Thermowell bar-stock with Exotic Material RF type thermowell have flanged. User can select as per requirement. This type of thermowell widely used in Oil & Gas, Chemical and Fertilizers sector.



FEATURES

- ⇒ Solid bar-stock drilled design
- ⇒ 3 different shank styles
- ⇒ Flanged process connection
- ⇒ RF Portion with exotic material

APPLICATION

- ⇒ Air & flue gas
- ⇒ Tanks & vessels
- ⇒ Oil & Gas applications
- ⇒ Corrosive environments
- ⇒ Power & Steel industries
- ⇒ HVAC, Air filters & utilities
- ⇒ On-shore/Off-shore application

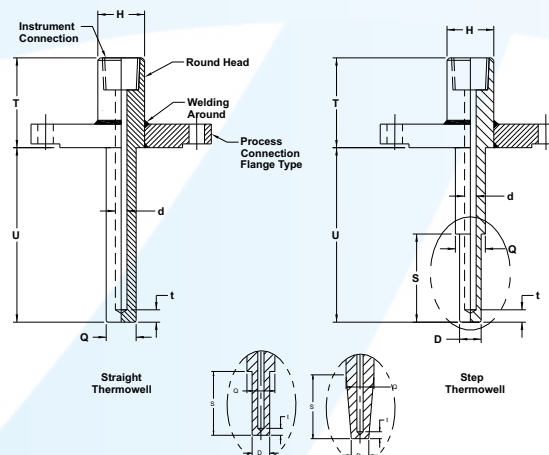
REFERENCE

- ⇒ IEC-584.2 / ANSI MC-96.1

STANDARD SPECIFICATIONS

Shank form	: Taper
Flange material	: AISI 316 SS
Well material	: AISI 316 SS
Instrument connection	: 1/2" NPT (F) / 1/2" BSP (F)
Bore diameter	: 6.6 mm
Lag extension	: 50 mm
Root diameter	: 25.0 mm
Tip diameter	: 18.0 mm
Immersion length	: 150 mm
Step / Taper Length	: 150 mm
Tip thickness	: 5 mm
Process connection	: Flange as per ANSI B16.5, EN 1092-1, JIS, etc.
Flange facing type	: Raised face
Head type	: Round
Head size	: 30 mm

DRAWING



ORDERING CODE

MTH04 - S - MB - MC

1. SHANK FORM		S	MB	MC
1. SHANK FORM	Straight	S		
	Tapered	T		
2. FLANGE MATERIAL	Carbon Steel / ASTM A105		MB	
	AISI 304SS		MC	
	AISI 316 SS		MF	
	Monel 400		MM	
	Hastelloy C-276		MO	
	Inconel 625		MR	
	Inconel 825		MT	
	Alloy 20		MY	
	AISI 321 SS		MI	
	AISI 310 SS		ME	
	AISI 316L SS		MG	
	Monel K-500		MN	
	Inconel 600		MQ	
	Inconel 800		MS	
	Titanium		MV	
	AISI 446 SS		M6	
3. WELL & FLANGE RF MATERIAL	Carbon Steel / ASTM A105			MB
	AISI 304SS			MC
	AISI 316 SS			MF
	Monel 400			MM
	Hastelloy C-276			MO
	Inconel 625			MR
	Inconel 825			MT
	Alloy 20			MY
	AISI 321 SS			MI
	AISI 310 SS			ME
	AISI 316L SS			MG
	Monel K-500I			MN
	Inconel 600			MQ
	Inconel 800			MS
	Titanium			MV
	AISI 446 SS			M6

ORDERING CODE

2NF - XXX - FF - R - A - T

4. INSTRUMENT CONNECTION	1/4" NPT (F)	2NF				
	3/4" NPT (F)	5NF				
	1/2" BSP (F)	4BF				
	M20 x 1.5 mm (F)	4MF				
	1/2" NPT (F)	4NF				
	1/4" BSP (F)	2BF				
	3/4" BSP (F)	5BF				
5. PROCESS CONNECTION	Refer Flange Table for the codes		XXX			
6. FLANGE FACING	Flat Face					FF
	Ring-Type Joint					RT
	Raised Face					RF
7. HEAD TYPE	Round					R
8. HEAD SIZE	Mention in 'mm'					XXX
	Recommended :					
	30 mm for flanges up to 1.5" sizes 35 mm for flanges above 1.5" sizes					
9. LAG EXTENSION ("T")	35 mm up to 250 mm					XXX
10. ROOT DIAMETER ("Q")	Mention in 'mm'					XX.X
11. TIP DIAMETER ("D")	Mention in 'mm'					XX.X
12. BORE DIAMETER ("d")	6.6 mm					A
	7.0 mm					B
	9.0 mm					C
	9.6 mm					D
	11 mm					F
	13 mm					G
	6.35 mm (1/4")					N
10 mm					O	
13. IMMERSION LENGTH ("U")	50 mm up to 1000 mm					XXX
14. STEP STYLE	Straight					
	Taper					

ORDERING CODE

M - WM

15. STEP / TAPER LENGTH ("S")	Mention in 'mm'	XXXX		
16. TIP THICKNESS ("#")	5 mm		M	
	6.35 mm (1/4")		N	
	10 mm		O	
17. CONSTRUCTION	Flange & well full penetration welded		FA	
	Flange & well thread jointed and sealWelded		FB	
	Flange & well seal welded		FC	
18. COATING ON WELL & FLANGE	PTFE		PD	
	Silicon carbide		PE	
	Tungsten carbide		PG	
	Zirconium oxide		PH	
	Stellite		PI	
19. SLEEVING/OVERLAY ON WELL & FLANGE	Hastelloy C-276		PS	
	Inconel 600		PV	
	Titanium		PW	
	Tantalum		PX	
20. OTHER OPTIONS	Plug & chain in SS	WI	IBR certification	SI
	Electro polishing	WK	Material test certificate 2.2	SM
	Marking by laser	WL	Tested to NACE standards	SN
	Marking by engraving	WM	Certification for Hydrogen service	SQ
	Material test certificate 3.1	SC	WFC as per PTC 19.3TW:2010	SW
	Dye penetration test	SD	Radiography for welding	SR
	PMI test	SF	Radiography for bore concentricity	SS
	IGC test	SG	Ultrasonic test	SU
	Hydro test certificate	SH		

Ordering Example : MTH04 - S - MB - MC - 2NF - XXX - FF - R - A - T - M - WM

NOTES:

1. Other diameters, connections are available, please contact factory for details.
2. Please refer "Technical Reference" for the proper selection of connections according to Head size and Outer diameter of the well.